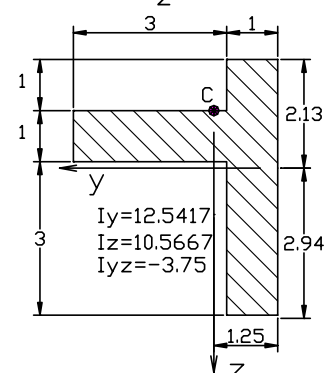
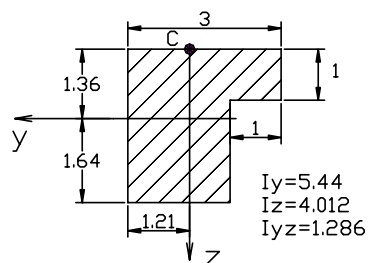
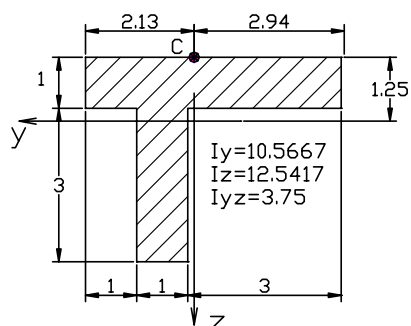
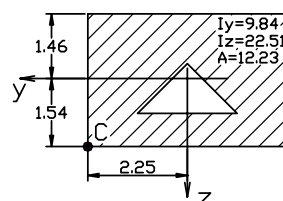
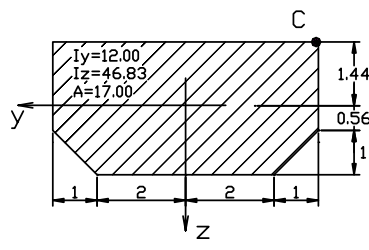
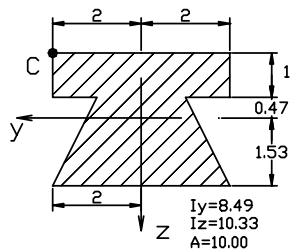
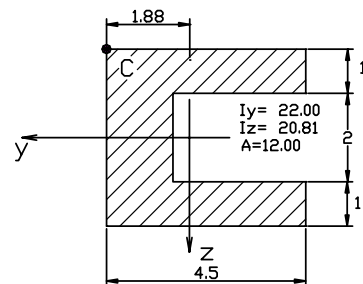
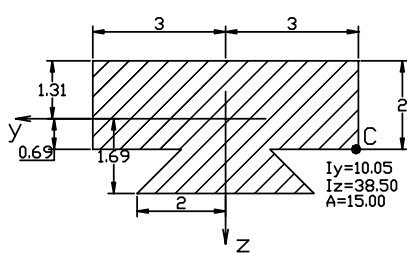
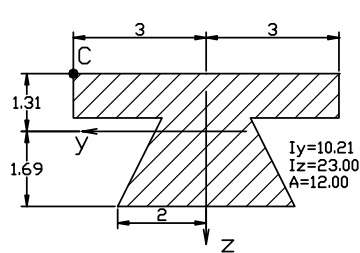


## Ekscentrično naprezanje

1. Ako ekscentrična sila pritiska deluje u tački C

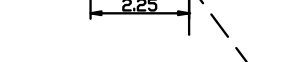
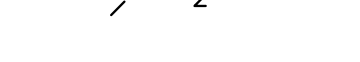
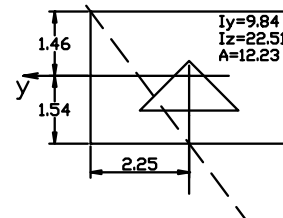
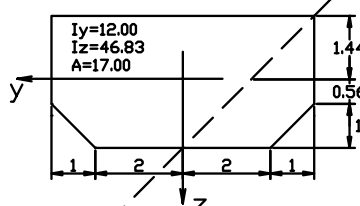
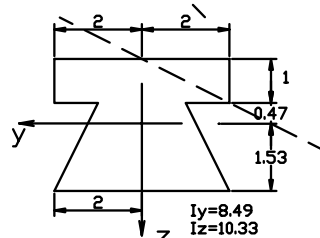
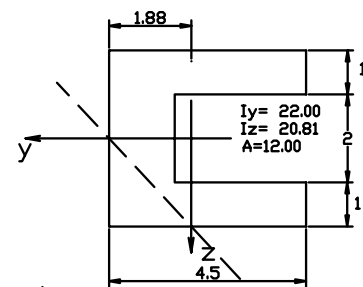
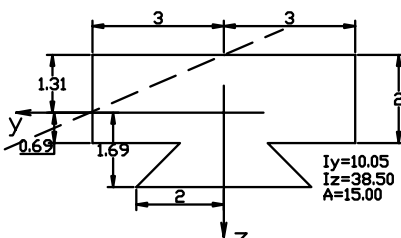
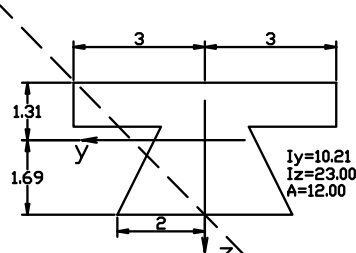


a) Napisati izraz za normalni napon

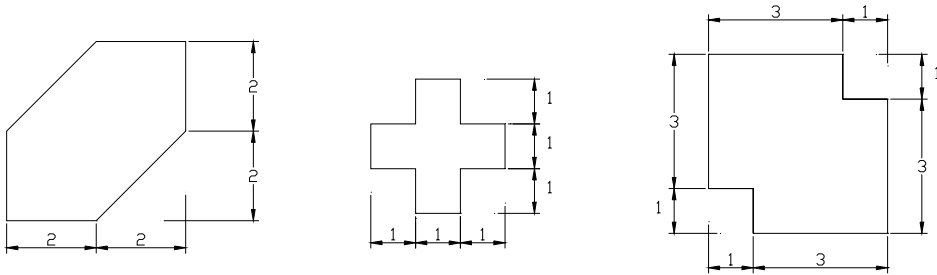
b) Nacrtati neutralnu liniju

c) Odrediti maksimalni smičući napon

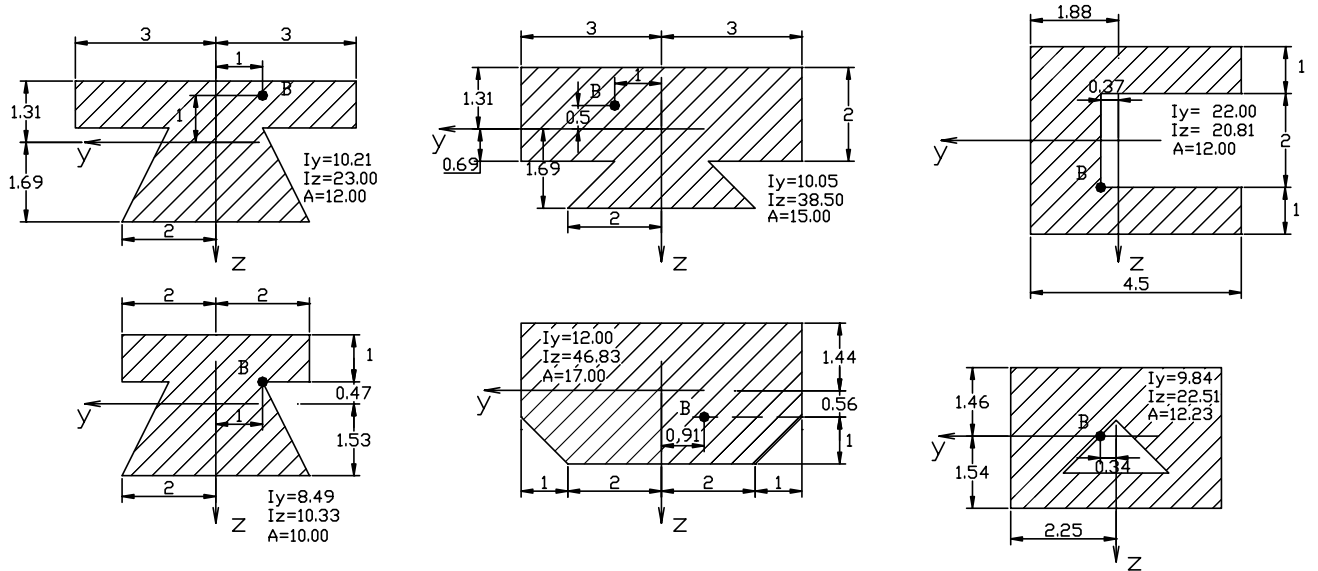
2. Odrediti položaj napadne tačke sile i nacrtati jezgro preseka



3 Nacrtati jezgro preseka



4. Odrediti da li tačka B pripada jezgru preseka (bez crtanja jezgra preseka):



5 Za zadati presek odrediti vrednost normalne sile ako ceo presek mora biti pritisnut a momenti savijanja imaju zadatu vrednost